



Partners for Children
South L.A.



Collective Impact In Action
Highlights from 2023



Dear Friends and Supporters,

As we reflect on the past year, I am filled with immense gratitude and pride for the incredible strides we have made together. Our journey has been marked by **significant achievements, unwavering dedication, and the collective effort of our passionate community**. I am also reminded of the countless stories of hope and transformation that have emerged from our work this year. One story that stands out is that of Leslie, a single mother of three, who came to us seeking a great deal of help for herself and her children. Through our System of Care and the commitment of our partner agencies, this family is no longer in crisis and is now flourishing.

Stories like Leslie's are powerful reminders of why we do what we do. This year, we have **expanded our programs, reached new milestones, and touched countless lives**, all thanks to your generous support and belief in our mission. Your contributions have enabled us to create lasting change and build a brighter future for children and families in South Los Angeles.

As we look ahead, we remain committed to our vision and are excited about the opportunities that lie before us. **We are working toward replicating our very important model in other communities**, which will further our mission and extend our reach. Together, we will continue to make a difference, one step at a time.

Thank you for being an integral part of our journey. Your unwavering support and dedication inspire us daily, and we are honored to have you by our side as we continue this important work.

With heartfelt appreciation,

Liza Bray

Executive Director, Partners for Children South L.A.



FROM OUR BOARD CHAIR

True leadership requires one to question who's at the table and who's not, and to think about those voices that aren't represented when you're making decisions.

This powerful statement underscores the core value of inclusivity that drives PCSLA's mission. Under the exceptional leadership of Executive Director Liza Bray, PCSLA has become a **beacon of hope for underserved children and families** in South Los Angeles. Liza's unwavering dedication, her ability to connect with the community, and her commitment to best practices have created a model organization that truly makes a difference.

PCSLA's work is essential to ensuring that all children, regardless of their background, have the opportunity to thrive. By providing access to **high-quality healthcare, early education, and family support**, PCSLA is building a brighter future for the children of South Los Angeles, a future filled with resilience and well-being.

Delores Brown

Chair, PCSLA Board of Directors

WE'RE ALL IN FOR SOUTH LOS ANGELES

South Los Angeles, also known as Service Planning Area 6 (SPA 6), is home to nearly one million residents. It remains one of the county's most systemically under-resourced areas.

Residents are predominantly Hispanic/Latino (70%) and African-American/Black (22%). Housing is a major challenge, with 55% of households facing a housing burden and 30% experiencing severe burdens, spending more than 30% or 50% of income on housing. SPA 6 has more than 14,500 homeless individuals, over 21% of LA County's homeless population.

Empowering Lives Together

PCSLA is a collaborative effort of 40+ health and human services organizations that partner to provide links to services and cross-agency care coordination for South Los Angeles children from birth through 5 years and their families.

Our groundbreaking Early Childhood System of Care brings together service providers who historically had never worked together to engage in a new kind of collaboration. Together, we're charting a new path forward.

PCSLA Early Childhood System of Care

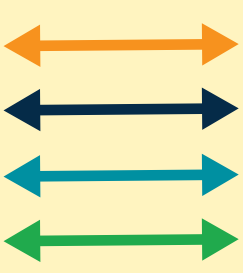
Client Journey



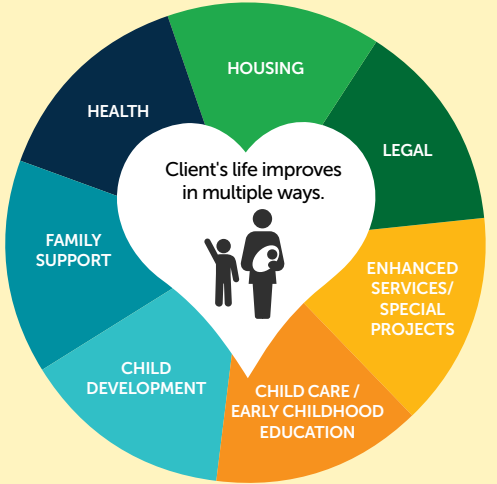
Client enters the Early Childhood System of Care through a Partner Agency or PCSLA.



Primary Care Coordinator (PCC) at the client's entry-point agency conducts screening to identify the client's service needs.



PCC manages service linkages and ensures cross-agency coordination. Partner Agencies must respond to clients within 3 days. PCC provides ongoing care coordination.



40+ Partner Agencies provide critical services in 7 key sectors. Plus, PCSLA provides enhanced services to meet immediate community needs.

PCSLA provides essential backbone support.



Identifies, evaluates, and selects Partner Agencies



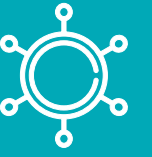
Trains Primary Care Coordinators from Partner Agencies



Provides ongoing monitoring, case support, and training



Maintains tracking and reporting data and conducts program evaluation

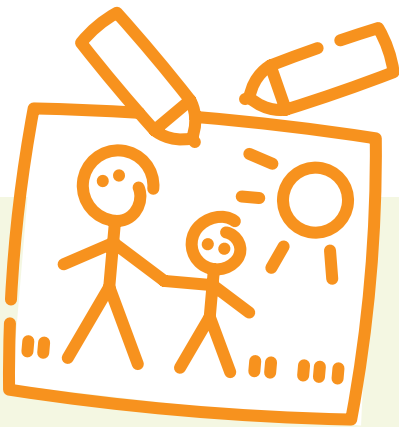


Provides custom data and technology platform

COLLECTIVE IMPACT IN ACTION

Since our inception, PCSLA has served more than **14,000** South Los Angeles children and their families.

2023 SERVICE SNAPSHOT



843

Total Families
Served

1,540

Total Non-Duplicated
Clients

2,305

Total Unique Services
Delivered

PROGRESS HIGHLIGHTS FROM 2023

Our evolution from six to nine professional staff enabled us to focus our energy on several important strategic priorities:



Strengthening Our System of Care and Backbone Support

- **New Partner Agency Structure:** We reorganized our structure to optimize strategic alignment and outcomes. Our partner agencies now fall under seven priority sectors, helping to ensure we offer every child and family the full spectrum of services they need from highly qualified agencies.
- **Technology and Data:** We advanced our investment in system enhancements to improve data collection and outcomes tracking, including enhancements that enable more detailed data capture on service linkage and service utilization.
- **Cross-Agency Training:** We expanded our training capacity to reach more PCSLA partner agencies and their staff. We saw an immediate increase in partner agency staff participation at each training, reaching more than 90 participants in a single training.



Filling a Vital Child Care Gap

Lack of access to child care is a major barrier for families seeking employment. PCSLA launched the Child Care Project to provide immediate, short-term child care subsidies for up to six months for families looking for employment or those starting a new job.



Meeting Specific Community Needs

- **Life Skills Project:** In January 2023, with support from the Conrad N. Hilton Foundation and in partnership with Upward Bound House, PCSLA piloted a Life Skills Project for young parents. Monthly workshops were conducted on financial literacy, healthy relationships, stress management, and more.
- **Faith-Based Project:** PCSLA continued to partner with seven South Los Angeles churches to deliver its Early Childhood System of Care to children and families in the Catholic community.
- **Kinship Project:** Celebrating its ten-year milestone, PCSLA continued to offer six peer-led support groups to approximately 70 relative caregivers.
- **Parent Wellness Project:** Designed specifically for young parents, PCSLA continued to offer three peer-led support groups to nearly 35 participants.
- **Health & Wellness Project:** In response to financial hardships, PCSLA continued to provide financial assistance and in-kind donations to families in crisis.



RENE'S STORY

*Just when you've had enough, life gives you more.
And just when you think it's rained enough,
It starts to pour.*

This often-quoted verse is one Rene Brown knows well, because she has lived it.

The incident that brought her to PCSLA began with a heart attack. Unable to work, Rene lost her job. With no income, she lost the home where she lived with her two children, Rosetta, 18, and Immanuel, 8. Now unemployed and unhoused, Rene and her children lived in her car for several months. Then, on Christmas Eve, her car was stolen.

Discouraged to the point of hopelessness and with nowhere else to turn, Rene sought help from her church. Holy Name of Jesus is one of seven Catholic churches that partner with PCSLA to identify and refer members of their parishes and others in crisis. A church staff member contacted PCSLA, and the process of meeting Rene and her family's needs began.

Determination pays off

For Rene and her Primary Care Coordinator, PCSLA's Tinaya Richardson, this process was not easy. Rene was initially turned down by a half-dozen housing and shelter agencies in or near the South Los Angeles area. Some were at full capacity, with no room for another family. Others were unable to provide assistance because Rene resided outside their service area.

After seven long months, Tinaya's determination and persistence finally paid off: She placed a follow-up call to Upward Bound House, a PCSLA partner agency that provides shelter and support for unhoused individuals with children. She was informed that Upward Bound House had space to accommodate Rene and her children.

"We knew that with enough effort we would eventually find a solution," says Tinaya. "Rene and I were both thrilled to receive the good news at long last."

Through PCSLA partner HACLA Work Source Center, Rene entered a job-orientation program. With that agency's assistance, she updated her résumé, embarked on a meaningful job search, and secured two night jobs.

Hope and confidence restored

Immanuel has since been diagnosed with autism, and Rene has sought additional help from PCSLA. She is seeking another job that offers daytime hours, so she can continue to sustain her household while spending quality time with Immanuel and attending to his developmental needs. Tinaya and PCSLA are there for her, assisting in Rene's job-search efforts.

Through PCSLA's support over the past year, Rene has regained hope and confidence in her ability to get help when it's needed most. She knows that next time it rains or pours, PCSLA will be there, offering vital resources and opportunities to empower herself and her family.

PARTNERS INVOLVED:

- Upward Bound House
- HACLA Work Source Center



"We knew that with enough effort, we would eventually find a solution."

Tinaya Richardson
Primary Care Coordinator



LESLIE'S STORY

Time is a precious commodity for Leslie Flores, a single mother with three young children who also cares for her disabled mother. Six-year-old daughter Blanca was thriving. However, Leslie began to be concerned about her two younger children, Geanna, 2, and Oscar, 9 months, when both began to exhibit delays in their development.

Living on a tight budget, Leslie was obliged to do without some essential baby supplies. And she longed for some “me time.” For her, this meant a comfortable place to share and exchange information regularly with others who were also contending with the ups and downs of parenting and caregiving.

But where to begin?

Worth a call

Living a block away from PCSLA partner St. Raphael Catholic Church, Leslie stumbled across a PCSLA brochure. It was worth a call, she figured, and she reached out to learn more.

PCSLA's Primary Care Coordinator, Maggie Bautista, conducted an initial intake evaluation and worked with Leslie to identify her and her children's needs. Next, she contacted PCSLA partners whose work focused on those needs. Maggie submitted a referral to the South Central Los Angeles Regional Center (SCLARC), a nonprofit organization that provides evaluation, diagnosis, treatment and support for children with, or at risk for, developmental delays. Geanna was diagnosed with delayed speech and motor skills development and began treatment for these issues. Little Oscar was also evaluated for a possible speech delay.

With Maggie's ongoing help and support, Leslie worked with another PCSLA partner, Children's Institute, which provides a variety of programs and services to children and families. There, Leslie attended Mommy and Me classes with her children. Leslie's baby supply needs were provided through PCSLA's Health & Wellness program. She received a double stroller for Geanna and Oscar, a car seat, diapers, a playpen, a twin mattress, and rental assistance.

“Me time”

Perhaps the most important component of PCSLA's support for Leslie was referring her to its Faith-Based Wellness Circle. Here, parents regularly share life's challenges in a supportive, trusting environment. When the stressors of child-rearing and caregiving get her down, Leslie knows her fellow participants will understand and provide support that eases her mind and lightens her load. She considers these meetings her “me time” — a time to relax and focus on herself. She has never missed a session.

Leslie's goal is to raise strong, happy, independent children. Through the help and resources provided by PCSLA, she is confident she will achieve this goal.

“I always recommend PCSLA to people I know, whether it's my neighbors or friends,” Leslie says. “Not everyone is ready to commit to the program, but I see it as their loss. They don't know what they're missing.”

PARTNERS INVOLVED:

- South Central Los Angeles Regional Center
- Children's Institute, Inc.
- Faith-Based Project Parent Wellness Circle



Living a block away from PCSLA partner St. Raphael Catholic Church, Leslie stumbled across a PCSLA brochure. It was worth a call, she figured, and she reached out to learn more.

PCSLA PARTNERS

SERVICE SECTORS AND PARTNER AGENCIES

CHILD DEVELOPMENT PARTNERS

Children’s Institute LAUSD Early Childhood
Special Education South Central Los Angeles
Regional Center
Wayfinder Family Services
Wellnest
Westside Infant-Family Network

FAMILY SUPPORT PARTNERS

South Central LAMP
Claris Health
First Place for Youth
Friends of the Children Los Angeles HACLA
Imagine LA
Los Angeles Regional Food Bank
Para Los Niños
Shields for Families

HEALTH PARTNERS

Partners for Pediatric Vision
Personal Involvement Center, Inc.
St. John’s Community Health
University Eye Center Los Angeles

HOUSING PARTNERS

Coalition for Responsible Community Development
HOPICS
PATH
The Whole Child
Upward Bound House

LEGAL PARTNERS

Alliance for Children’s Rights
Legal Aid Foundation of Los Angeles

CHILD CARE/EARLY CHILDHOOD EDUCATION PARTNERS

Crystal Stairs, Inc.
Girls Club of Los Angeles

ENHANCED SERVICES/SPECIAL PROJECT PARTNERS

Baby2Baby
Community Coalition
Echo
Institute for Maximum Human Potential
Junior Achievement of Southern California
Los Angeles Regional Food Bank
Maternal Mental Health Now
Holy Name of Jesus Catholic Church
Nativity Catholic Church
St. Aloysius Catholic Church
St. Raphael Catholic Church
St. Eugene Catholic Church
St. Odilia Catholic Church
St. Columbkille Catholic Church

BOARD & ADVISORS

BOARD AND GOVERNANCE

Board of Directors

Delores Brown
President & CEO
CEDC/Institute for Maximum Human Potential

Jacqueline Chun
Associate Director
Center for Strategic Partnerships

LaJoi McClendon
Chief Operating Officer
Stone Tapert Insurance Services

Mark Soto
Deputy City Attorney, Public Rights Division
Office of the Los Angeles City Attorney

Program Advisory Committee

Delores Brown
President & CEO
CEDC/Institute for Maximum Human Potential

Dexter A. Henderson
President & CEO
South Central Los Angeles Regional Center

Jackie Majors
Chief Executive Officer
Crystal Stairs, Inc.

Jennifer Braun
President & CEO
Alliance for Children’s Rights

Elena Fernandez
Chief of Programs
St. John’s Community Health

Veronica Lewis
Director
Homeless Outreach Program Integrated Care Services

Christine Mirasy-Glasco
Executive Director
Upward Bound House

Martine Singer
President & CEO
Children’s Institute, Inc.



OUR TEAM

Liza Bray
Executive Director

Grisel Morales
Project Director

Koriel Jones
Administrative and Human
Resources Manager

Tinaya Richardson
Senior Faith-Based Project
Manager/Family Advocate

Margarita Bautista
Faith-Based Project
Manager/Family Advocate

Eddie Velez
Faith-Based Project
Manager/Family Advocate

Lydia Hernandez (they/she)
Special Projects Manager

Mary-Helen Leal
Special Projects Coordinator

Mildred Comeaux
Project Coordinator

EMPOWERING COLLECTIVE IMPACT

We deeply appreciate the funders who have been with us from the beginning as well as those who are new to the PCSLA family. Their visionary support fuels our mission and makes our work possible.

- | | |
|--|---|
| The Atlas Family Foundation | W.M. Keck Foundation |
| Ballmer Group | Lincy Foundation |
| Blue Shield of California | Los Angeles County Department of Mental Health (Children’s Institute, Inc.) |
| The California Endowment | Ralph M. Parsons Foundation |
| The Carl & Roberta Deutsch Foundation | Reissa Foundation |
| The Change Reaction | The Rose Hills Foundation |
| Conrad N. Hilton Foundation | Los Angeles County Board of Supervisors |
| The David & Lucile Packard Foundation | Roy and Patricia Disney Family Foundation |
| Los Angeles County Department of Children and Family Services (Children’s Institute, Inc.) | Social Venture Partners |
| Dwight Stuart Youth Fund | Specialty Family Foundation |
| The Eisner Foundation | Stuart Foundation |
| First 5 LA (South Central Los Angeles Regional Center) | SAMHSA (St. John’s Community Health) |
| Jewish Community Foundation of LA | Snap Foundation |
| The JIB Fund | Tikun Olam Foundation |
| Kaiser Permanente | UniHealth Foundation |
| | The Weingart Foundation |



**Partners for Children
South L.A.**

Working together for young children and families

301 North Prairie Avenue, Suite 515
Inglewood, CA 90301
Phone 323.607.0333

partners4childrensla.org